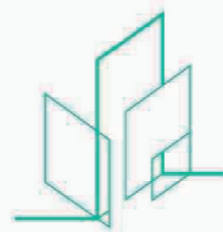


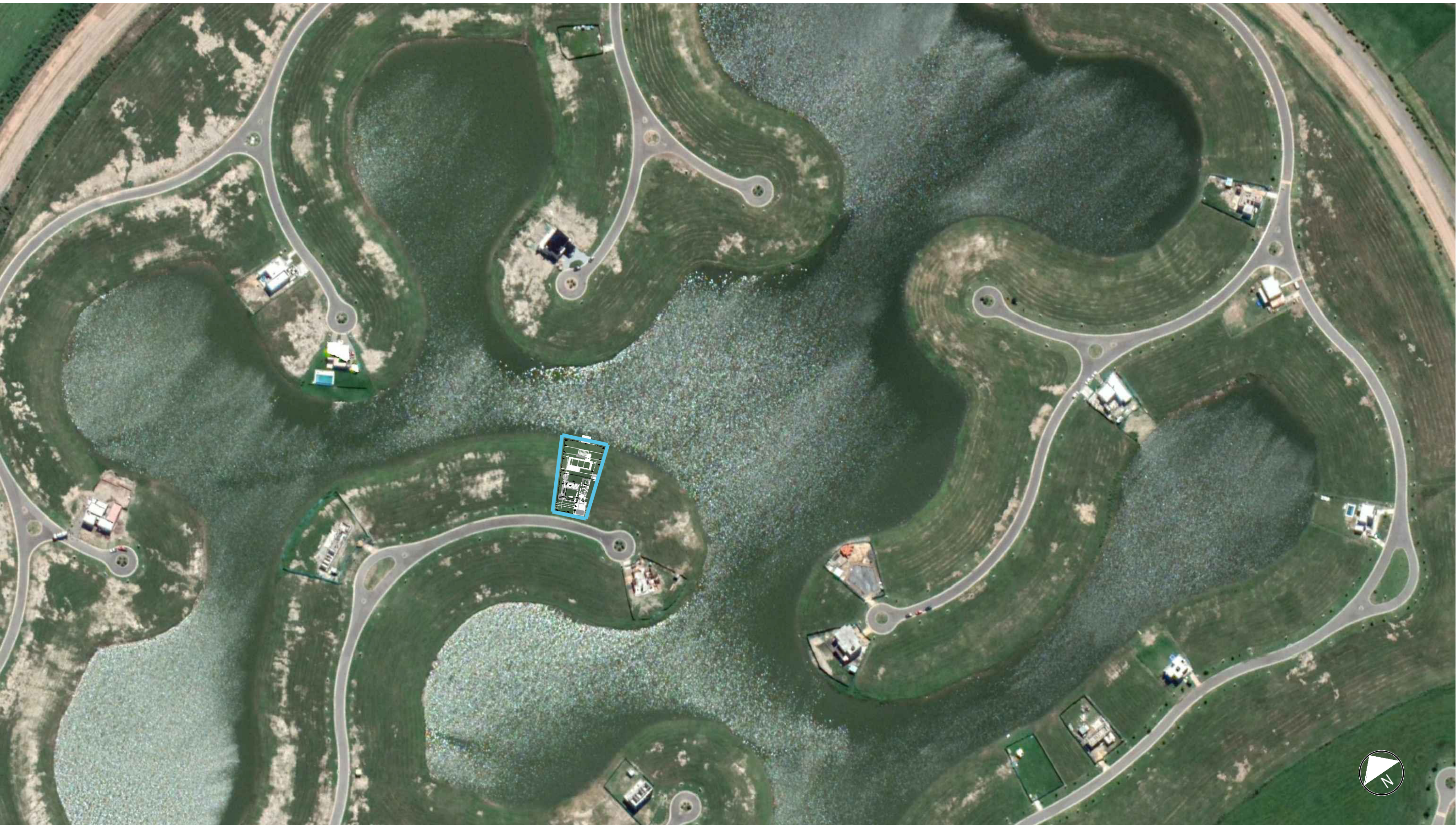
# [ BET House ]

Arq. César Gabriel Arabeau



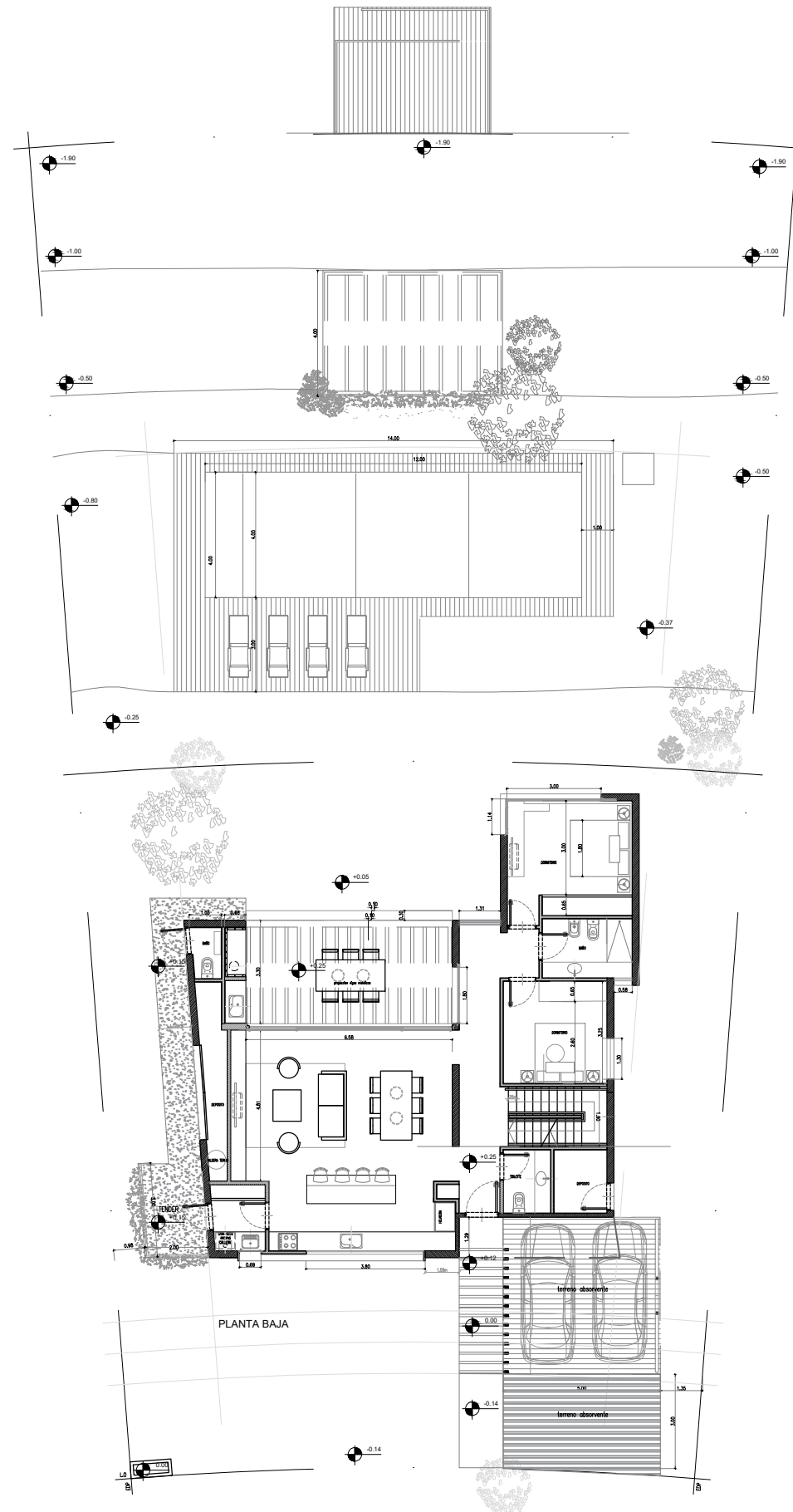
**P E R T** | Real Estate

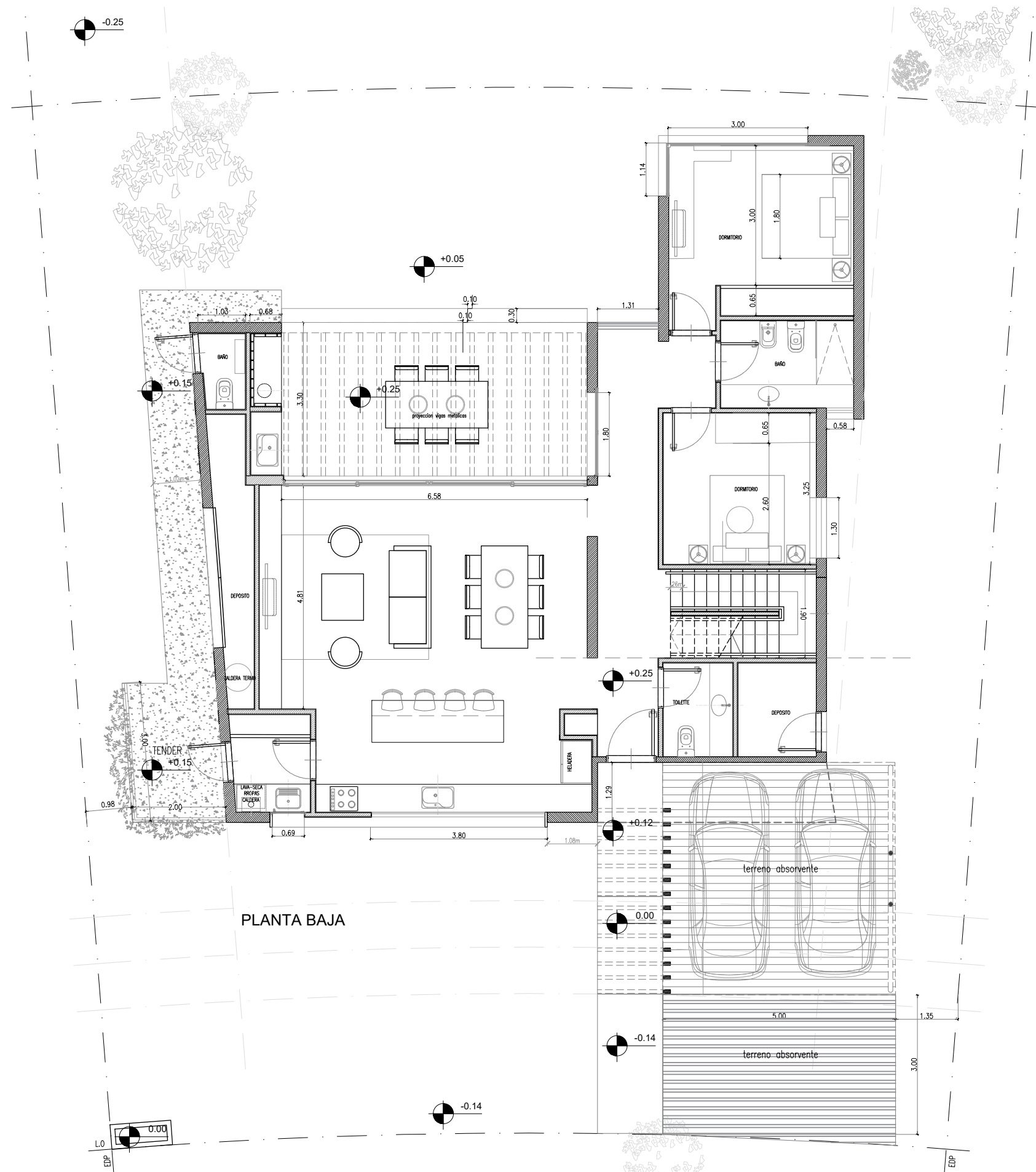






SUPERFICIE DEL TERRENO: 901m<sup>2</sup>  
SUPERFICIE CUBIERTA TOTAL: 170.16m<sup>2</sup>  
-PB 119.50m<sup>2</sup>  
-PA 50.66m<sup>2</sup>  
SIP. GALERIA PB: 22.00m<sup>2</sup>  
SUP. PERGOLA ACCESO: 32.00m<sup>2</sup>  
SUP TERRAZA PA: 15.85m<sup>2</sup>  
PISCINA: 48m<sup>2</sup>  
SOLARIUM: 43.60m<sup>2</sup>

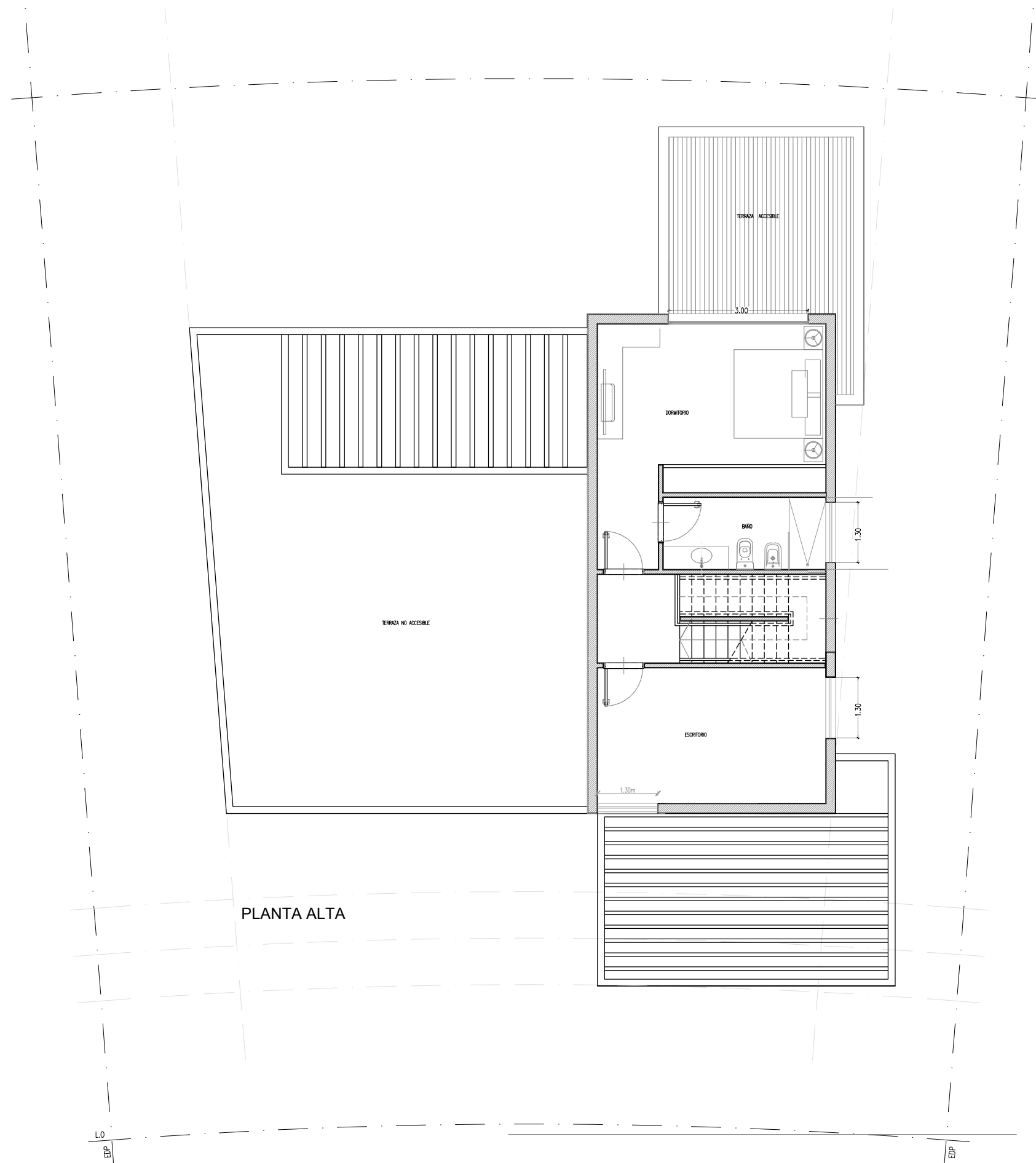




PLANTA BAJA 1:100

SUPERFICIE CUBIERTA  
SIP. GALERIA PB:

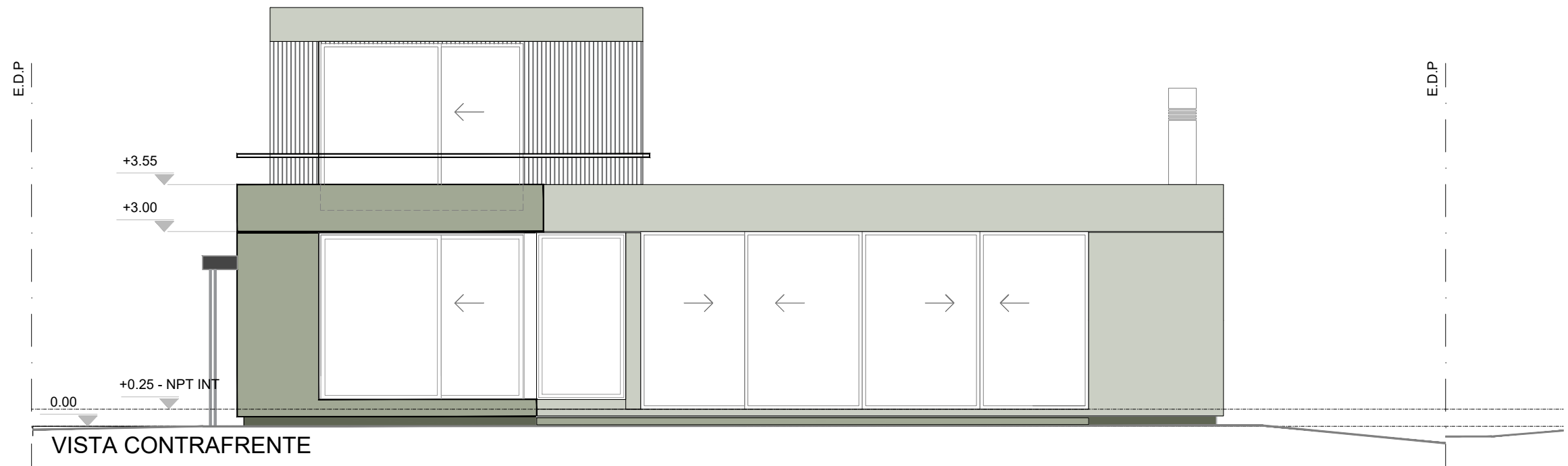
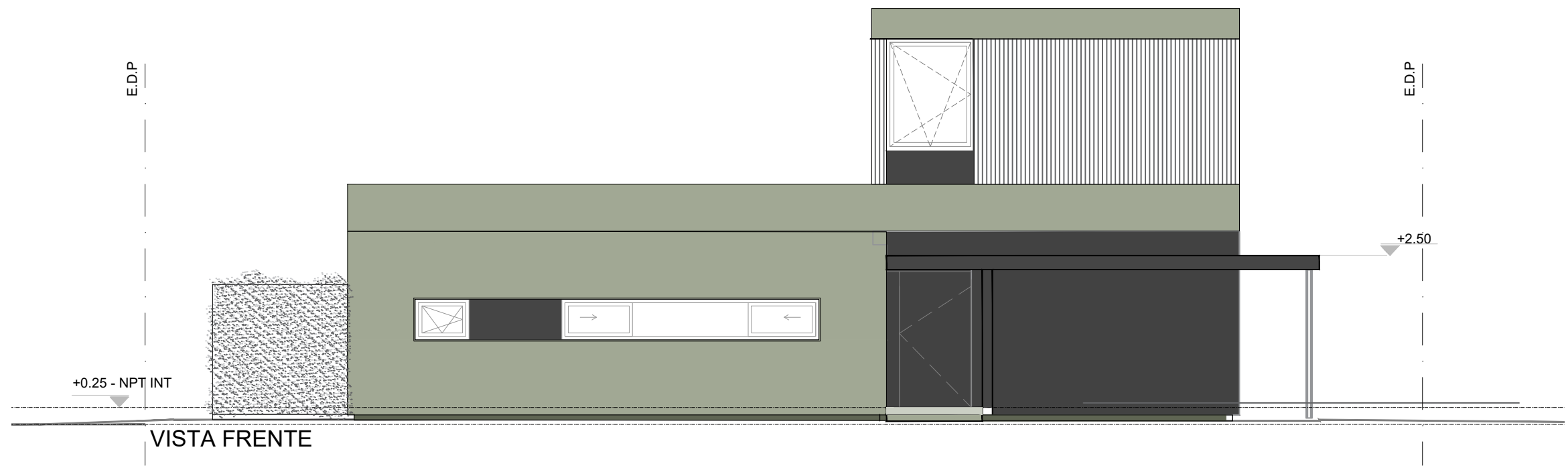
119.50m<sup>2</sup>  
22.00m<sup>2</sup>

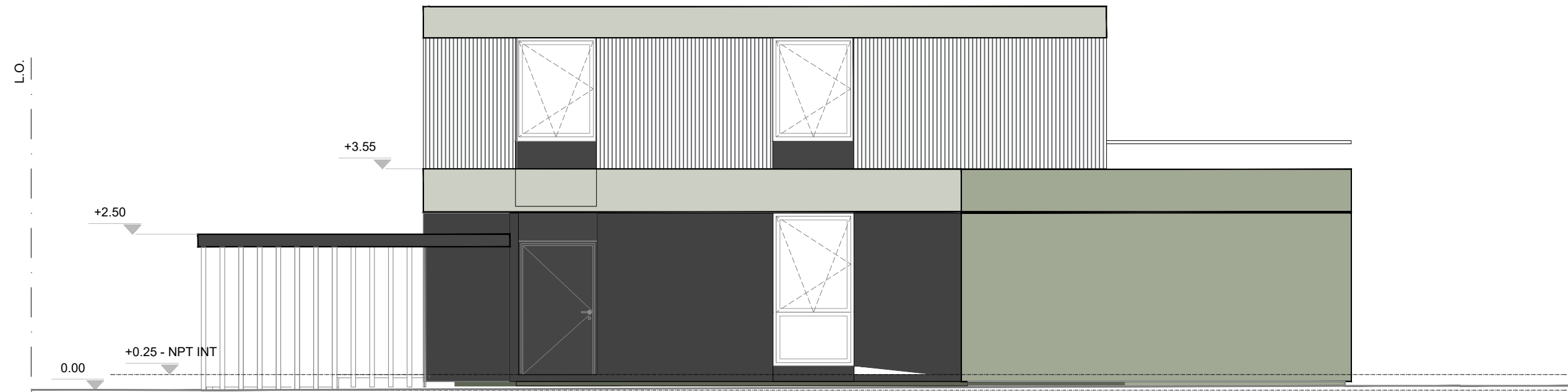


PLANTA ALTA 1:100

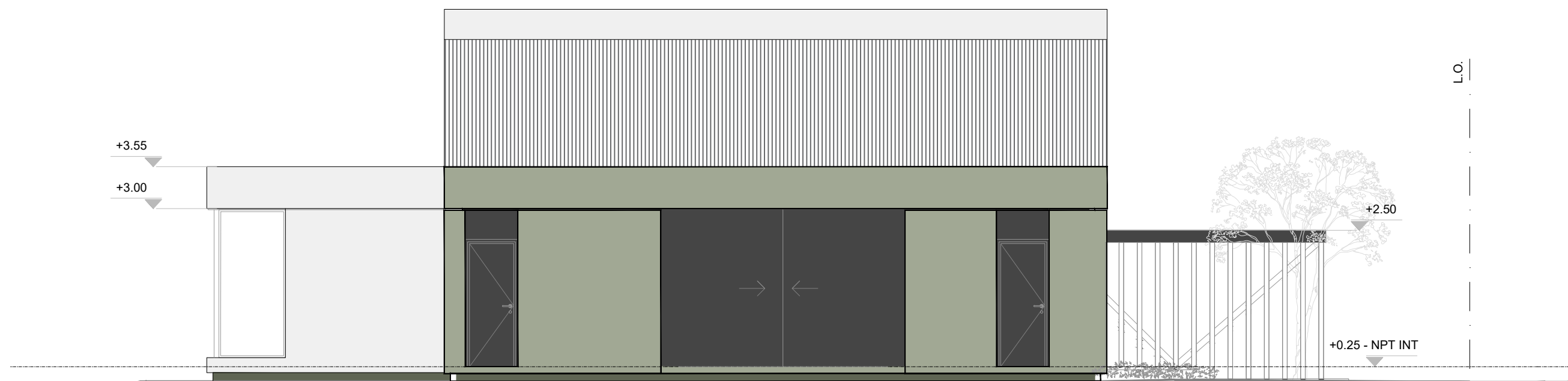
SUPERFICIE CUBIERTA  
SIP. GALERIA PB:

50.66m<sup>2</sup>  
15.85m<sup>2</sup>





VISTA LATERAL - DORMITORIOS



VISTA LATERAL - DEPOSITO



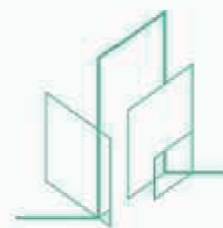


CONTACTO

[info@pertrealestate.com](mailto:info@pertrealestate.com)

IG: @pertrealestate

[www.pertrealestate.com](http://www.pertrealestate.com)



**P E R T** | Real Estate